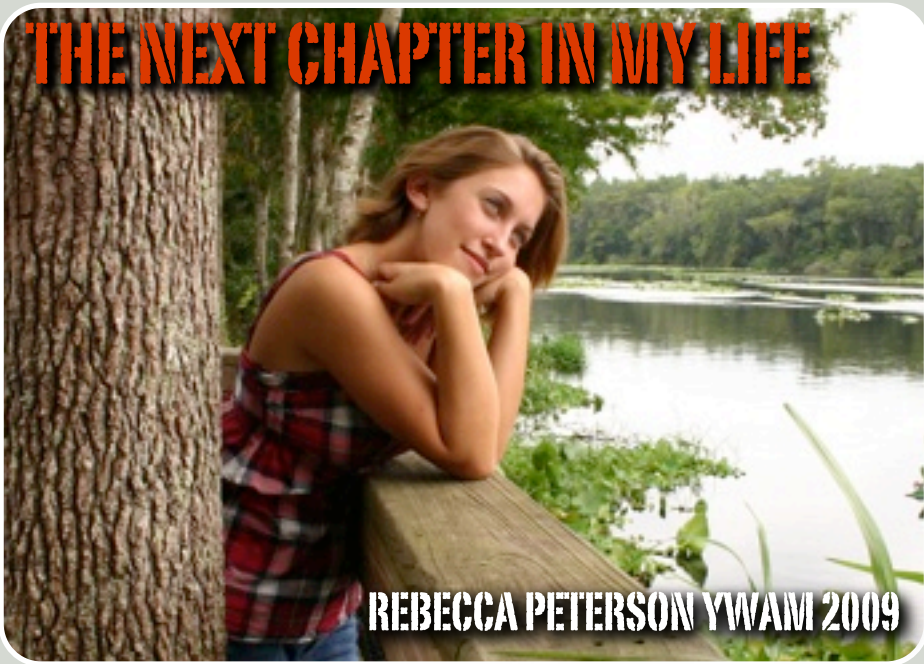


# THE NEXT CHAPTER IN MY LIFE



REBECCA PETERSON YWAM 2009

## My Dream...

I was sitting at my desk early one morning last year when it hit me! I knew what I wanted to do with my life! Sparks flew, my eyes got big, my heart pumped and I felt alive! It happened while I was reading a fitness magazine in my Care and Prevention of Athletic Injury class. I want to start a children's camp. I want to share the love God has for His children, inspire them, and let them know they are a unique and perfectly designed creation. It is something I could wake up doing and never tire of. Without a doubt I know this was not some random thought, it's a dream that God has placed in my heart.

## The Road Less Traveled...

There will be many steps in achieving this dream. In short, I say all this because I have been given a great opportunity to help develop the gifts God's given me and a time to deepen my relationship with my heavenly Father. The opportunity is YWAM, in Ozark, Arkansas. YWAM stands for Youth with a Mission. Their vision is to "disciple young people for missions and life-calling, to work with the local Body of Christ, and mobilize workers to obey Jesus' commission to share the Gospel Locally and in the unreached areas of the world." The school I am attending is an Outdoor Adventure DTS, or Discipleship Training School. Three months consists of classroom training, and then two months doing an outreach in the Amazon!

## How You Can Help...

I will need much prayer as I start this adventure. For the challenges I will face anywhere at anytime, and just for keeping my focus on God. As I continue to work I will need financial support as well. Altogether I need about \$6000, which includes room and board, transportation, local outreaches, and my trip to the Amazon. I know you may not be able to help financially but prayer is just as important. If you would like to help support my mission and vision by prayer, donation, or both it will be received with much gratitude.

## Thank You...

Thank you so much for taking time out of your day to read this, and considering my needs for prayer and financial support. I am so excited about this school and outreach; I hope you can share in my excitement!

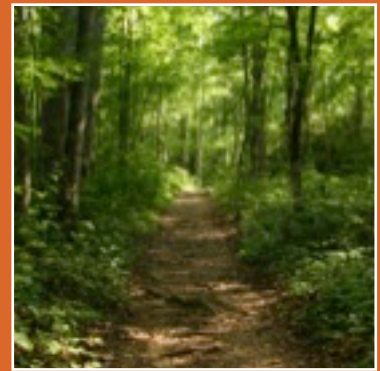
You can make a tax-deductible donation in my name made out to **LifePoint Christian Church** or online at [www.lifepointchurch.com](http://www.lifepointchurch.com) just click on "online giving" and make your donation to the "Rebecca Peterson YWAM Fund."

## LifePoint Christian Church

PO Box 953923

Lake Mary, FL 32746

Or for more information call  
**407-327-6468**



**"Good, better, best. Never let it rest until your good is better and your better best."**

# YOUTH WITH A MISSION



Pack your bags



Outdoor Adventure D.I.S



more about YWAM:  
YwamOzarks.com

## Schooling Expenses:

Lecture Phase:	\$3,275
Outreache Phase:	\$2,500
<b>Total Schooling:</b>	<b>\$5,775</b>

## Supplies:

Hiking Boots	\$110
Extended Trip Backpack	\$110
Sport Sandals	\$75
Headlamp	\$30
Small Compact Pillow	\$10
Rain Jacket	\$40
Climbing Harness	\$42
Lightweight Mess Kit	\$20
Warm Hat	\$20
Standard Backpack	\$25
Laundry	\$25
Miscellaneous	\$200
<b>Total Supplies:</b>	<b>\$707</b>



Thank you for helping to support my dream\*  
 "For I know the plans I have for you declares the Lord, plans to prosper you and not harm you, to give you hope and a future." Jeremiah 29:11

Follow me on my journey at:  
<http://ebeccaray.blogspot.com>